
Animal Classification

Grade 10

Animal Classification



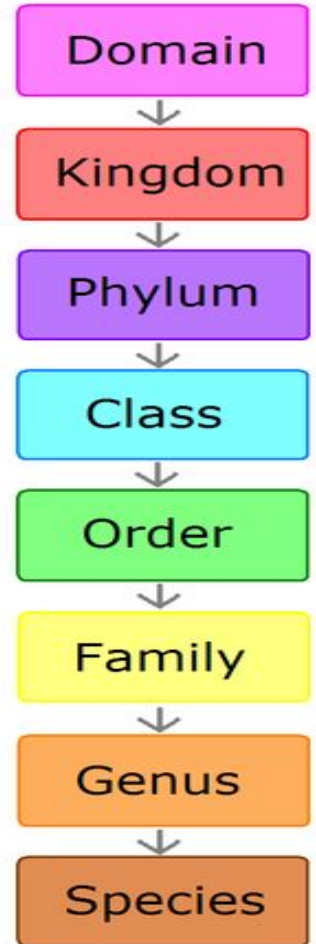
Kids Prefer Cheese Over Fried Green Spinach.

Watch:

https://www.youtube.com/watch?v=h79oaC_TwO4

<https://www.youtube.com/watch?v=p9XY9EEdZEI>

<https://www.youtube.com/watch?v=zAmD3a0qxRg>



Traditional Method of Animal Classification

Traditional method of animal classification was done on the basis of presence and absence of **NOTOCHORD**



Identify Me

(i) I am diploblastic & acoelomate. Which phylum do I belong to?

I am from **phylum Cnidaria** or **Coelenterata**

(ii). My body is radially symmetrical. Water vascular system is present in my body

I am **Starfish/Asterias**. I belong to the **phylum Echinodermata**.

(iii) I live in your small intestine. Pseudocoelom is present in my thread like body. In which phylum will you include me?

I belong to the **phylum Aschelminthes**, name is **Ascaris**.

Though I am multicellular, there are no tissues in my body. What is the name of my phylum?

I am from **Phylum - Porifera**

Classify...

Pigeon

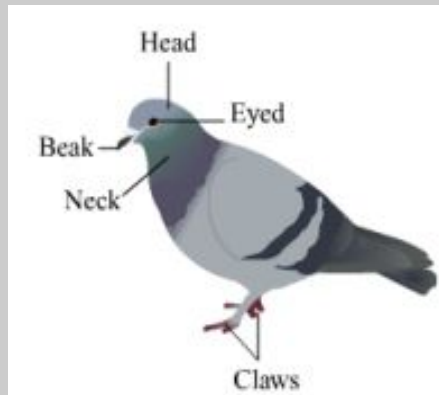
Kingdom- Animalia

Phylum- Chordata

Subphylum - Vertebrata

Class- Aves

Genus- Columba



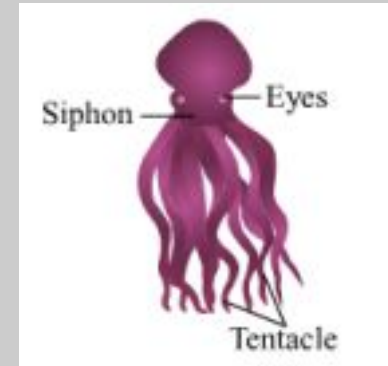
Octopus

Kingdom- Animalia

Division-Non-chordata

Phylum- Mollusca

Genus- Octopus



Classify...

Wall lizard

Kingdom- Animalia

Phylum- Chordata

Subphylum - Vertebrata

Class- Reptilia

Genus- Hemidactylus



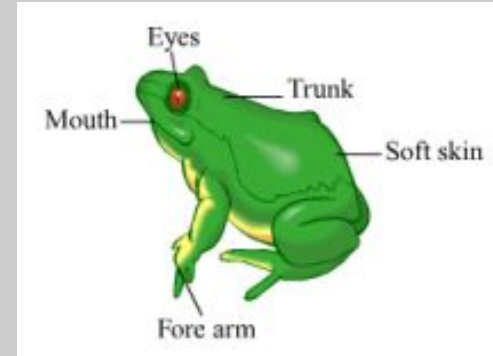
Frog

Kingdom- Animalia

Phylum- Chordata

Class- Amphibia

Genus- Rana



Classify...

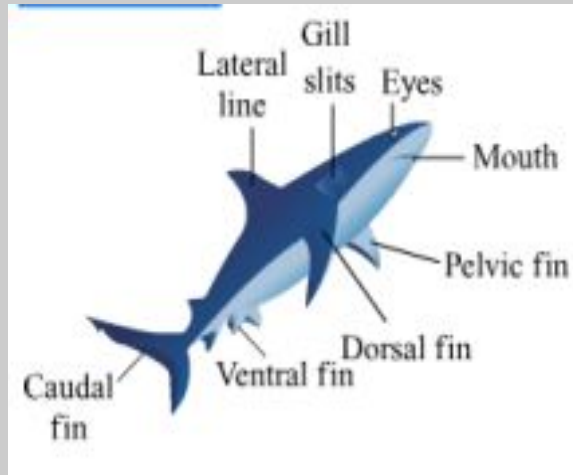
Shark

Kingdom- Animalia

Phylum- Chordata

Class- Pisces

Genus- Isurus



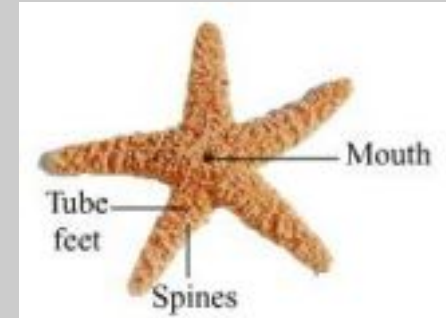
Star Fish

Kingdom- Animalia

Division- Non-chordata

Phylum- Echinodermata

Genus- Asterias



Distinguish between butterfly and bat with the help of four distinguishing properties.

Butterfly



Bat



Non-chordate	Chordate
Phylum -Arthropoda.	Phylum Chordata and class mammalia.
Characteristic feature is the presence of jointed appendages.	Characteristic feature is the presence of mammary glands.
presence of chitinous	Exoskeleton is in the form of hair or fur.

Bath Sponge

Kingdom	Subkingdom	Phylum
Animalia	Non-chordata	Porifera animal

Characters: Bath sponge is a marine round in shape and Blackish in colour. It has a porous and asymmetrical body. It has spongin fibres and spicules which serve as skeletons. Bath sponges have good water-holding capacity. It is a sedentary animal which is fixed to some substratum in the aquatic environment. Reproduction is by budding. It also has a good regeneration capacity.



Grasshopper

Kingdom	Subkingdom	Phylum	Class
Animalia	Non-chordata	Arthropoda	Insecta

Characters: Grasshopper has jointed appendages. There are three pairs of legs and two pairs of wings. It is a terrestrial insect which is well adapted to the surrounding environment by showing camouflage. It has a chitinous exoskeleton. The respiration is by tracheae.



Penguin

Kingdom	Subkingdom	Class
Animalia	Chordata	Aves

Characters: Penguin is a flightless bird inhabitant of cold snow-clad regions. It has an exoskeleton of feathers. The body is well adapted to survive in cold regions. It is a warm-blooded bird. The forelimbs are modified into wings. But due to excessive body weight, the penguins are not seen flying. It can wade in the water with modified hind limbs.



Frog

Kingdom	Phylum	Class
Animalia	Chordata	Amphibia

Characters: The frog is a true amphibian that can live in water as well as on land. When on land it respire with the help of lungs while in water it uses its skin for breathing. It does not have an exoskeleton. The skin is soft, slimy and moist. Body is divisible into the head and trunk. Two pairs of limbs are seen. The forelimbs are short and used for support during locomotion. The eyes are large and protruding. Since the neck is absent, such eyes help in looking around. The tympanum is present.



Elephant

Kingdom	Phylum	Class
Animalia	Chordata	Mammalia terrestrial

Herbivorous mammal adapted to survive in hot and humid tropical forests. It is a mammal and hence shows viviparity and milk secretion. The body is divisible into head, neck, trunk, and tail. The proboscis is a characteristic feature of the elephant which is actually a modified nose

